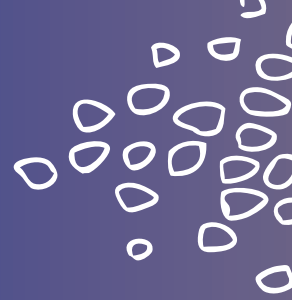


# GRADES 4,5



## EDUCATIONAL PROGRAMS

These programs last 50 minutes and include activities using artifacts or scientific specimens. Some programs also include investigations, demonstrations, or data collection and analysis. Programs are limited to a maximum of 25 students per class.

**FEE** \$35 per class + museum admission

### Dinosaur Feasts

What do scientists know about how dinosaurs ate? Students will compare dinosaur fossils and modern animal specimens to discover how both carnivorous and herbivorous dinosaurs crunched and munched their food.

**PASS** **GRADE 4** Science Process 1.2, 2.1, 4.4, 5.3 | Life Science 3.1, 3.2

**GRADE 5** Science Process 1.2, 2.1, 4.4, 5.3 | Life Science 2.1

**"We researched various earth biomes and this class really reinforced the interaction between biotic and abiotic factors."**

FOURTH-GRADE TEACHER  
CENTRAL ELEMENTARY, WARR ACRES

### Web of Life

How is a tree connected to a coyote? From plants to animals to fungus, students will use museum specimens to create a community, learn about how an ecosystem works, collect and graph class data, and discover how all organisms in an ecosystem are connected.

**PASS** **GRADE 4** Science Process 1.2, 3.1, 4.2, 4.3, 5.1, 5.3, 5.4 | Life Science 3.1, 3.2

**GRADE 5** Science Process 1.2, 2.1, 3.1, 4.2, 4.3, 5.3, 5.4 | Life Science 2.1, 2.2

### Wild and Rare

Everyone hears about endangered species, but of the many plants and animals around us, which ones are endangered? Which ones are threatened? Which ones are surviving? Students will learn what makes a species vulnerable to extinction, then use museum specimens and hands-on materials to gather information and predict the futures of several species.

**PASS** **GRADE 4** Science Process 1.2, 3.1, 4.3, 5.1, 5.3, 5.4 | Life Science 3.1, 3.2 | **GRADE 5** Science Process 1.2, 2.1, 3.1, 4.3, 5.3, 5.4 | Life Science 2.1, 2.2

