

## STOP 10—BLUE CREEK CANYON

Geology of Paleozoic sedimentary rocks, including Cambrian Reagan Sandstone and Honey Creek, Fort Sill, and Signal Mountain Formations; Ordovician McKenzie Hill and Cool Creek Formations; and Permian Post Oak Conglomerate. Secs. 2, 3, 10, 11, T. 4 N., R. 13 W., Comanche County, Oklahoma. **R. N. Donovan, A. Babaei, and D. J. Sanderson.**

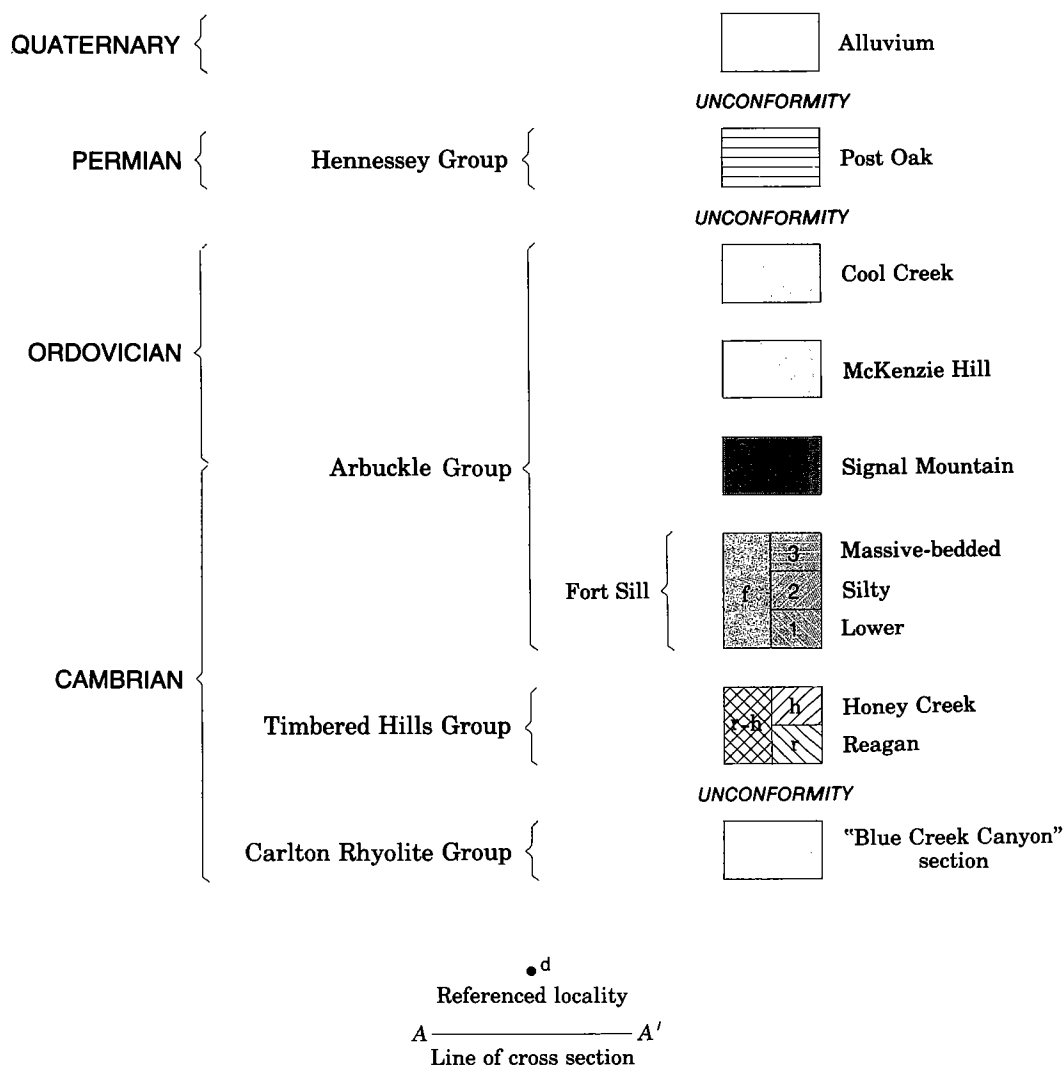
### Introduction

The land on both sides of Blue Creek Canyon belongs to Mr. and Mrs. Charlie B. Oliver of the Kimbell Ranch. We are very grateful to them for allowing us constant access to their land. Visitors are requested to obtain permission to examine the rocks from the ranch and to respect the area.

Recently, one of us (Donovan), in conjunction with

Dr. Dave Sanderson, of Queen's University, Belfast, and several graduate students from the Department of Geology at Oklahoma State University (Babaei, 1980), has been engaged in a long-term study of the Slick (or Limestone) Hills north of the Wichita Mountains. The purpose of the present excursion is to examine some of the more accessible geologic elements of these hills. In particular, we will examine outcrops of high quality on both sides of the road running through Blue Creek Canyon. These outcrops present features of interest to sedimentologists, stratigraphers, structural geologists, and volcanologists. The exposures will be examined on two walks of about a mile each. In addition, if time permits, there will be two short roadside stops to examine features associated with the Post Oak Conglomerate. Figure 154 is a

### EXPLANATION



Geology by R. N. Donovan and A. Babaei

Base from U.S. Geological Survey, Meers, 1:24,000, 1956  
Photorevisions as of 1975