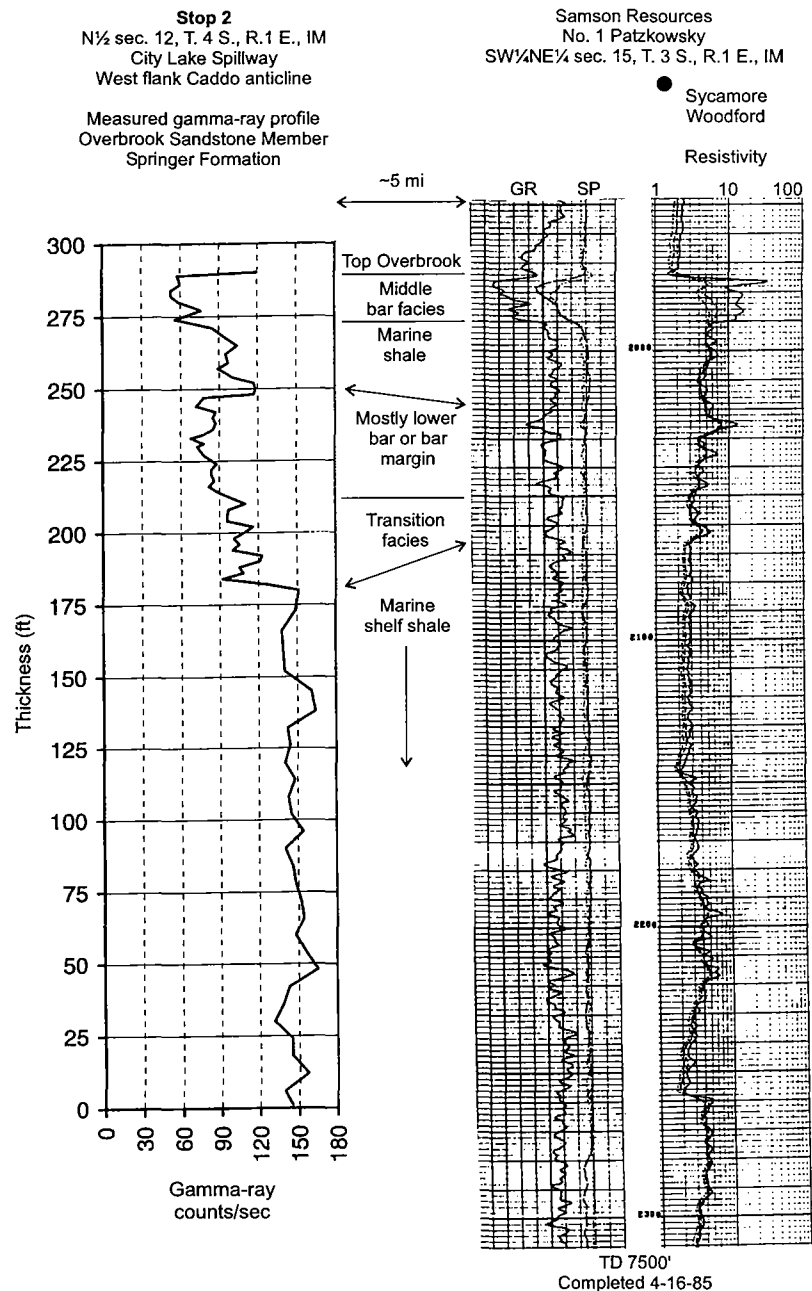


Figure 13. *Left side of figure*—Surface gamma-ray (GR) profile of the Overbrook Sandstone Member of the Springer Formation (Stop 2), measured at the spillway for City Lake dam. *Right side of figure*—Subsurface well logs from the Samson Resources No. 1 Patzkowsky well for the same stratigraphic interval shown in the surface GR profile. The surface GR profile and the well logs are plotted at the same vertical scale.



STOP 3

PRIMROSE SANDSTONE MEMBER OF THE GOLF COURSE FORMATION AND LAKE ARDMORE SANDSTONE MEMBER OF THE SPRINGER FORMATION (Academy Church Section)

Location: SE¼NW¼SE¼ and NE¼SW¼SE¼
sec. 1, T. 3 S., R. 2 E., Carter County
(Gene Autry 7.5' quadrangle)

Directions: From Springer, drive 5.5 mi east on the black-top road (1 mi north of State Highway 53); turn north at the Calvary Baptist Church sign and proceed to the church (shown as the Academy Church on the Gene Autry 7.5' quadrangle map); park at the east side of the cemetery and walk east down to the creek. The measured section starts at the east-west property-line fence and ends downstream, where alluvium covers the exposures of bedrock.

Two named sandstones are exposed at Stop 3 (Fig. 14). They are (1) the Primrose Sandstone, which crops out along the tributary of Cool Creek (Fig. 15) and in the railroad cut just east of the stream (Fig. 16), and (2) the Lake Ardmore Sandstone, of which only a single 2.4-ft-thick