

Figure 32. Cross-sectional view of the thin-bedded Lake Ardmore Sandstone (Unit 2, Fig. 28) exposed at the south side of the driveway to MGM Ranch, just beyond the fence. Note the pits marking fossil burrows. The perspective in this figure is looking down on upturned edges of steeply dipping beds that protrude only a few inches above ground level. Geologic pick for scale.



**Stop 6A**  
SE¼SE¼ sec. 27, T. 3 S., R. 1 E., IM  
MGM Ranch  
West flank Caddo anticline

Measured gamma-ray profile  
Lake Ardmore Sandstone Member  
Springer Formation

Samson Resources  
No. 1 Patzkowsky  
SW¼NE¼ sec. 15, T. 3 S., R. 1 E., IM

● Sycamore  
Woodford

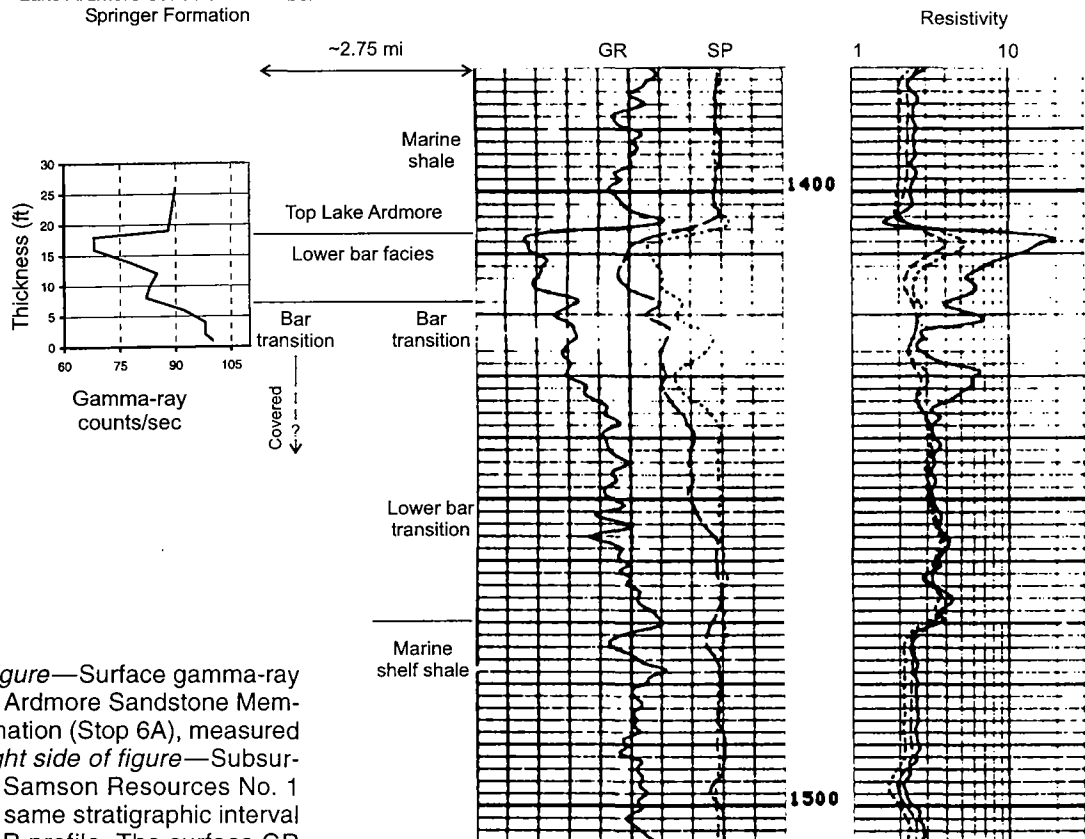


Figure 33. *Left side of figure*—Surface gamma-ray (GR) profile of the Lake Ardmore Sandstone Member of the Springer Formation (Stop 6A), measured at the MGM Ranch. *Right side of figure*—Subsurface well logs from the Samson Resources No. 1 Patzkowsky well for the same stratigraphic interval shown in the surface GR profile. The surface GR profile and the well logs are plotted at the same vertical scale.

TD 7500'  
Completed 4-16-85