

STOP 6B

OVERBROOK SANDSTONE MEMBER OF THE SPRINGER FORMATION (MGM Ranch Headquarters Section)

*Location: SE¼SE¼SW¼SE¼ sec. 34, T. 3 S., R. 1 E.,
Carter County (Springer 7.5' quadrangle)*

This stop is on private property.

Please contact Michael G. McCauley, 2410 N. Commerce, Ardmore, Oklahoma, phone (580) 226-0812 (business) or (580) 223-5872 (home) for permission to visit outcrops.

Directions: From Stop 6A, continue on the Trail Ranch driveway for ~0.1 mi to the ranch house; park, and walk south to the exposures on the south side of a small hill, just north of the corral, and to the "wall" east of Rock Creek, just below the corral.

A 54-ft-thick, thin-bedded, ripple-bedded, parallel-bedded, extensively burrowed sandstone is well exposed in a small hill at this stop (Figs. 34–36). The outcrop is on the southwest flank of the Caddo anticline. Beds strike N. 25° W. and dip S. 65° W. at 64°. Note the similarities between this exposure of the Overbrook and Unit 2 at Stop 2, City Lake Spillway Section (Fig. 9). A spectacular "wall" is formed by Unit 4 (Fig. 34), where a blocky, medium- to

MEASURED SECTION, STOP 6B Overbrook Sandstone Member of the Springer Formation (MGM Ranch Headquarters Section)

SE¼SE¼SW¼SE¼ sec. 34, T. 3 S., R. 1 E., Carter County (Springer 7.5' quadrangle). Measured by LeRoy A. Hemish in the exposure on the south side of a small hill south of the ranch house and also in the steep "wall" east of Rock Creek, just below the corral. Beds strike N. 25° W. and dip S. 65° W. at 64°.

Thickness
(feet)

SPRINGER FORMATION

OVERBROOK SANDSTONE MEMBER

4. Sandstone, light brown (5YR6/4) to moderate orange pink (5YR8/4) with light brown (5YR5/6) staining; very fine grained, well sorted, sub-rounded, quartzose, well indurated, medium- to thick-bedded, blocky; contains high-angle cross-bedding, some asymmetrical ripples; upper surface has abundant interference ripples; noncalcareous; trace fossils common; includes mud clasts that weather out to form cavities; contains ironstone concretions and boxwork structures on some surfaces; lower contact covered; upper surface forms "wall" in stream valley below dam and is presumably in sharp contact with shale.. 11.0
3. Covered ~110.0

Stop 6B
Overbrook Sandstone Member of the Springer Formation
(MGM Ranch Headquarters Section)

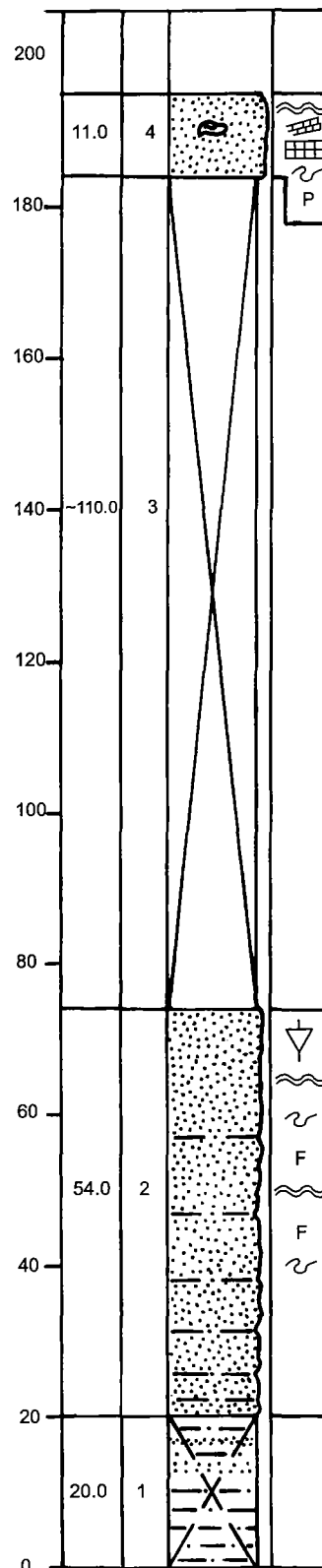


Figure 34. Graphic columnar section of rocks exposed at the MGM Ranch headquarters at Stop 6B. Explanation of symbols in Appendix 1.